



Street Operations
1080 South 1st Avenue
Pocatello, ID 83201
(208) 234-6250
(208) 234-6194
Fax: (208) 478-7152

TO: ALL AGENCIES
DATE: February 1, 2011
FROM: City of Pocatello
RE: Portneuf River Levee Maintenance Bi-Annual Report

Dear Sir,

In the past 6 months since our July 31st report, the City has continued their efforts towards all deferred maintenance items as outlined in the USACOE report dated, August 18, 2009 and the Williams Engineering report, dated October 27, 2010. While working towards compliance, we have also noted in our attached inspection reports, some deficiencies we are currently working on. Our most recent focus has continued to be on vegetation and closure repairs. We feel these areas of focus would most benefit Public Safety in the case of an unusual event.

The City's focus will continue to be to strive towards compliance with all deferred maintenance, as duly noted in previous inspection reports. Again, we are working on an extended time period for compliance and completion of all maintenance requirements. As previously discussed, we will be working on sections of the levee as they have been divided, per the map provided to the City by the USACOE and verified by our City survey crew.

Attached you will find our 90 day inspection reports, as well as, progress reports for the ongoing maintenance.

If you have any questions or concerns, please feel free to contact me at (208)234-6250.

Sincerely,

Randy Ghezzi
Street Operations Superintendent



Street Operations
1080 South 1st Avenue
Pocatello, ID 83201
(208) 234-6250
(208) 234-6194
Fax: (208) 478-7152

Vegetation Deficiencies

Vegetation—The vegetation on the easterly bank of the levee from South Bannock Highway to the Concrete Channel remains overgrown and untouched at this time. In the next few months, we will be focusing on all vegetation deficiencies along this area.

Vegetation Completed

Since July 2010, we have completed the entire westerly bank of vegetation management along the levee system.



Our mission is to provide public services related to the safe and efficient movement of traffic on the 265 miles of city maintained streets, within the incorporated city limits.



Street Operations
1080 South 1st Avenue
Pocatello, ID 83201
(208) 234-6250
(208) 234-6194
Fax: (208) 478-7152

Depressions and Rutting Deficiencies

Along the west side we currently have noted rutting from maintenance vehicles accessing the levee system. This will be repaired at the completion of our planned work.

Depressions and Rutting Completed

In October 2010, at station 3+50 to 4+00, we repaired a crack in the levee system which was on the land side of the levee.



Our mission is to provide public services related to the safe and efficient movement of traffic on the 265 miles of city maintained streets, within the incorporated city limits.



Street Operations
1080 South 1st Avenue
Pocatello, ID 83201
(208) 234-6250
(208) 234-6194
Fax: (208) 478-7152

Closure Deficiencies

None at this time.

Closure Repairs and Maintenance

All closures have been marked with a number that coincides with a map provided in the Williams Engineering report. These closures have also been marked with a sticker that provides the inspection and exercise date. All closures are exercised and functioning properly at this time.



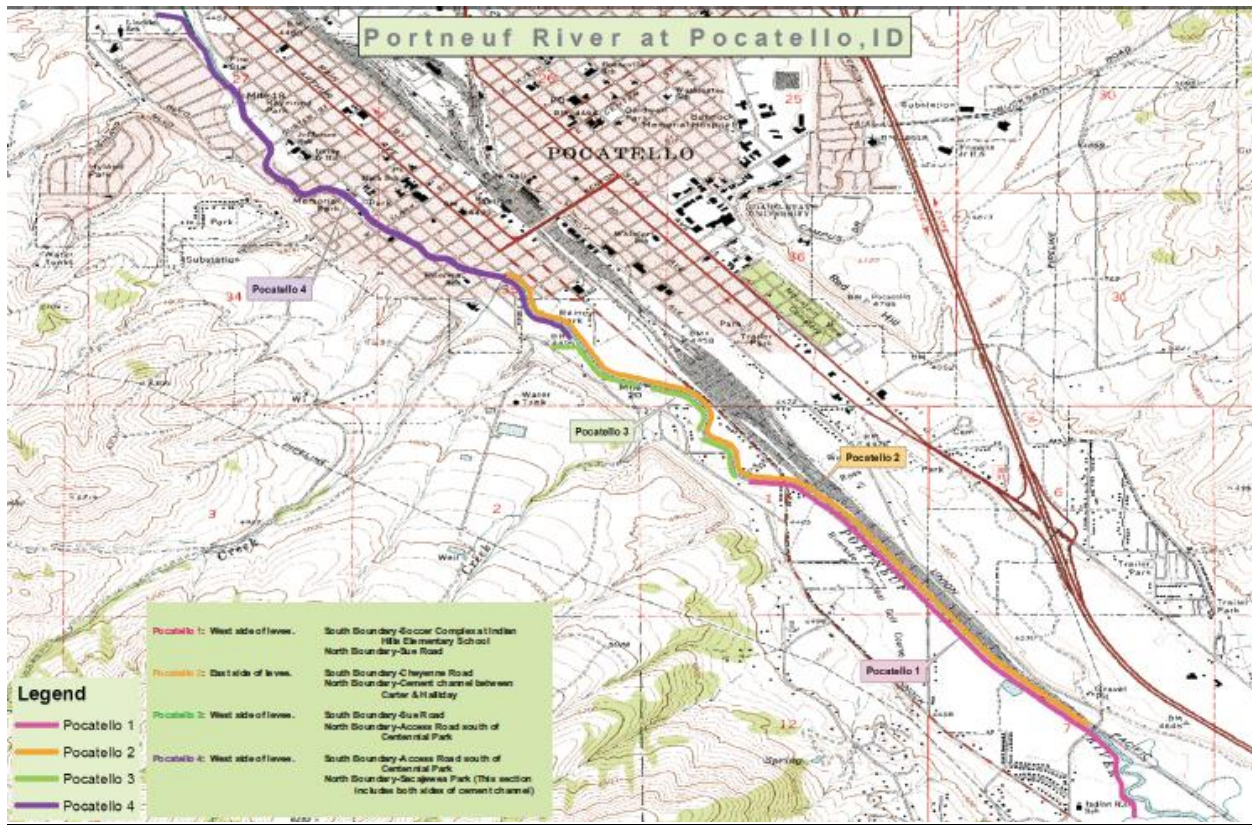
Our mission is to provide public services related to the safe and efficient movement of traffic on the 265 miles of city maintained streets, within the incorporated city limits.



Street Operations
1080 South 1st Avenue
Pocatello, ID 83201
(208) 234-6250
(208) 234-6194
Fax: (208) 478-7152

Levee Sections

Attached is a levee section map with actual high points. The City would request approval from the ACOE recognizing the high points, as noted for the different levee sections. As noted on the attached map, there may be more than the original four high points as shown on previous maps.



Our mission is to provide public services related to the safe and efficient movement of traffic on the 265 miles of city maintained streets, within the incorporated city limits.



Street Operations
1080 South 1st Avenue
Pocatello, ID 83201
(208) 234-6250
(208) 234-6194
Fax: (208) 478-7152

Access Deficiencies

No deficiencies at this time.

Sloughing & Cracking Deficiencies

There are currently no locations showing signs of sloughing and cracking along the levee. The levee appears to have no compromise to the structural integrity at this time. The noted erosion problems from previous reports have been addressed and no others have been noted.

Seepage, Saturated Areas

No seepage or saturated areas at this time.

Slope Stability

No displacement or bulges.

Animal Burrows

We currently have a number of burrows along the levee system. These burrows are isolated between Cheyenne and South Bannock Highway and do appear to be within the rip rap area of the levee. We are currently working towards a solution to this problem.

Encroachments

There appears to be three noted deficiencies at this time. All three are currently being addressed and the offenders have been directed to remove their encroachments.

Bank-line

All noted rip rap deficiencies have been repaired

Structural Foundation

During our last inspections in May and September of 2010, we noted an area of the levee that had been cut through for drainage purposes. We are currently planning on all repairs taking place in spring, summer of 2011.

October 25, 2010 — Street Operations Department was informed of structural problems with the levee at station 4+50 to 5+50. The structural problems were repaired and documented by City of Pocatello and Williams Engineering, Inc.