

POCATELLO POLICE DEPARTMENT FY2009 Service Level Report



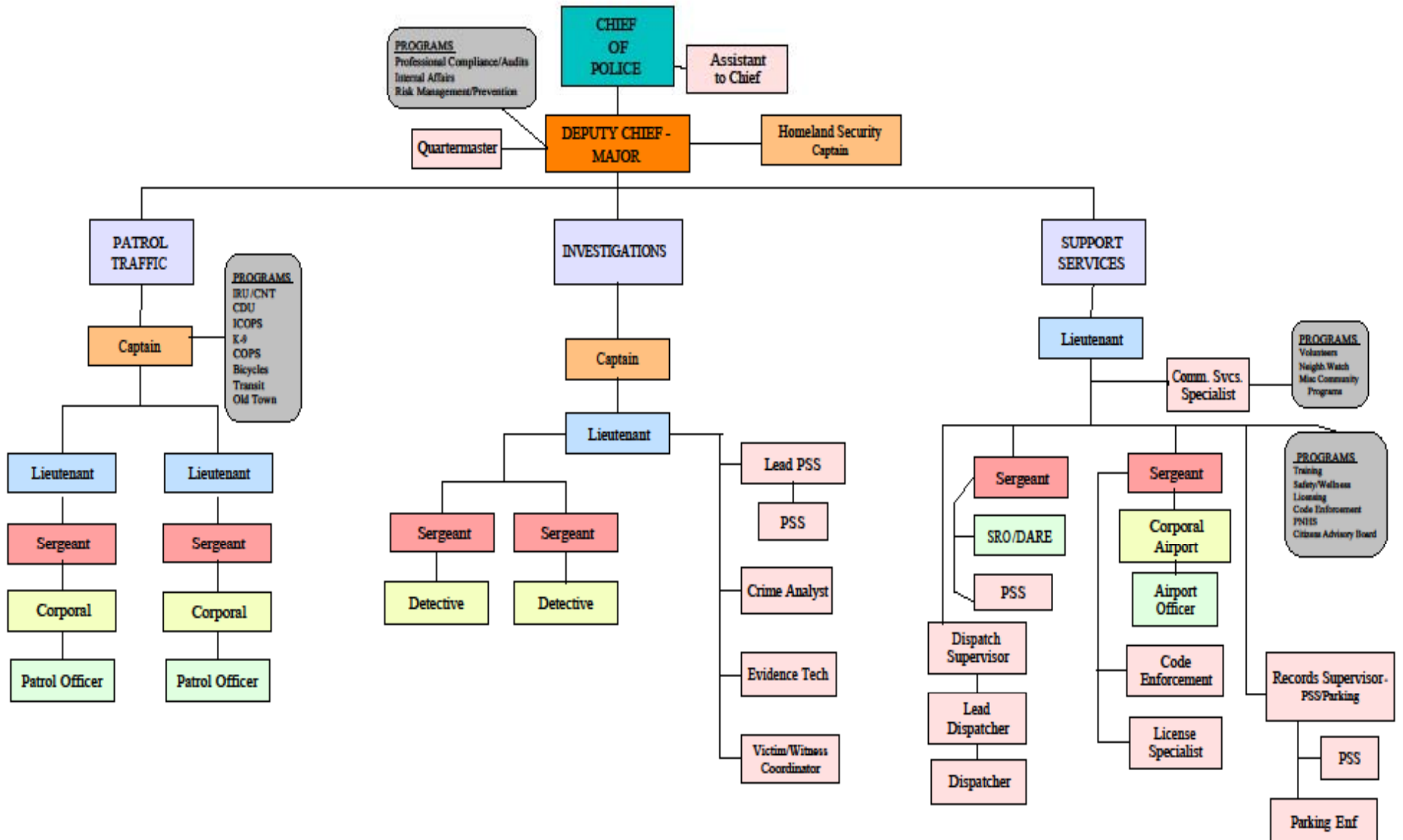
MISSION STATEMENT

The mission of the Pocatello Police Department is to enhance the quality of life in the City of Pocatello by working cooperatively with the community and within the framework of the U.S. Constitution to equally enforce the law, preserve the peace, reduce fear and provide for a safe community environment.

CITY OF POCA TELLO POLICE DEPARTMENT

Organizational Chart

as of January 4, 2010



Measures of Inputs

Money

	FY 2005 ACTUAL	FY 2006 ACTUAL	FY 2007 ACTUAL	FY 2008 ACTUAL	FY 2009 ACTUAL	FY 2010 BUDGET
POLICE DEPARTMENT						
Labor	7,826,313	7,863,496	8,175,989	9,160,445	9,225,955	9,547,611
Operating	1,133,644	1,198,768	1,538,525	1,393,327	1,394,731	1,388,769
Capital	202,783	211,678	168,032	181,952	149,557	223,900
Total	9,162,740	9,273,942	9,882,546	10,735,724	10,770,243	11,160,280
CPI	199.2	201.8	208.9	216.6	216.2	
Real FY05 \$	9,162,740	9,154,456	9,422,039	9,874,528	9,924,425	
% Change in Real FY05 \$, FY05-FY09					8.31%	
POLICE GRANTS						
Labor	611,884	570,161	625,661		513	41,742
Operating	250,384	1,343,782	966,133	189,384	165,757	162,273
Capital	23,918	24,144		198,667	17,057	220,000
Total	886,186	1,938,087	1,591,794	388,051	183,327	424,015
CPI	199.2	201.8	208.9	216.6	216.2	
Real FY05 \$	886,186	1,913,117	1,517,620	356,922	168,930	
% Change in Real FY05 \$, FY05-FY09					-80.94%	

Measures of Inputs (Continued)

People

Police	FY05	FY06	FY07	FY08	FY09	FY10	FY05-FY09 Change
Full Time Sworn	91	88	89	89	89	89	-2
Part Time Sworn	2	2	2	2	2	2	0
Full Time Civilian	32	36	38	38	37	37	5
Half Time Civilian	2	2	2	2	2	2	0
Total FTE	125	126	129	129	128	128	3

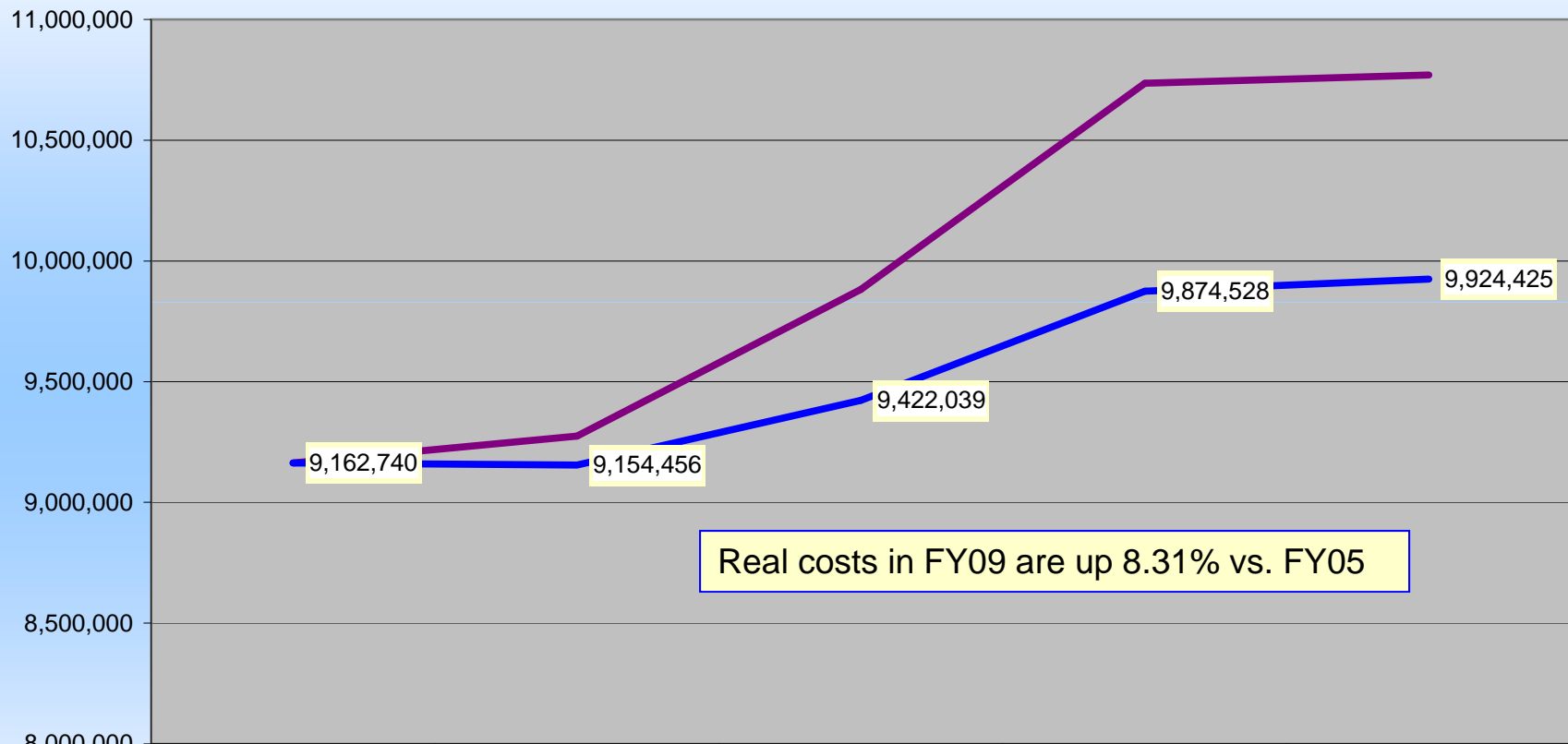
Inherited Capital

Police station (21,125 sq ft), 2 substations
(Transit & Fred Meyer); vehicles, dispatch

FY09 Program Revenue: \$804,927
FY09 Net Cost: \$10,148,643 (\$184.85 per capita)

Analysis of Inputs

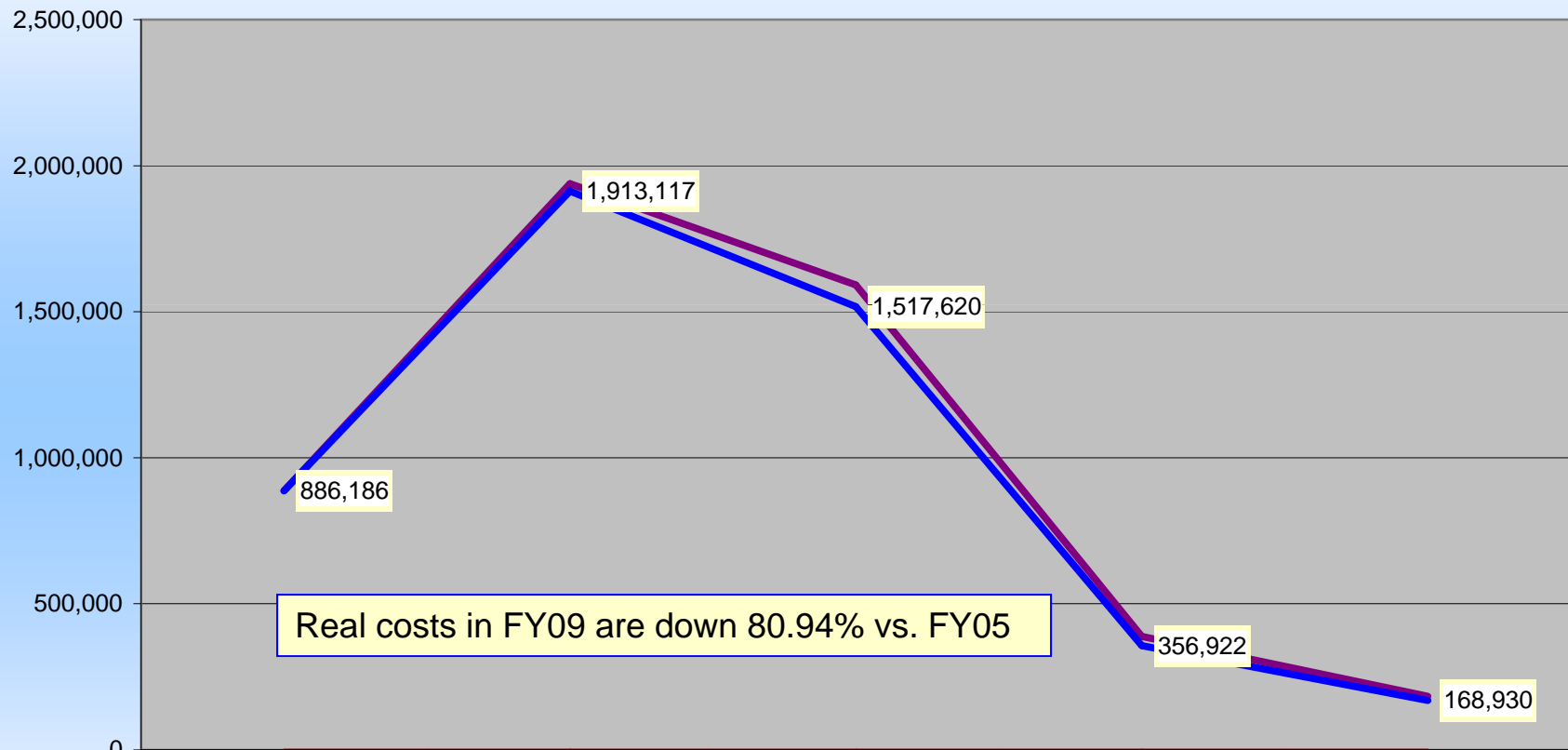
Police Department Nominal & Real FY05-FY09



	ACTUAL FY 2005	ACTUAL FY 2006	ACTUAL FY 2007	ACTUAL FY 2008	ACTUAL FY 2009
Total	9,162,740	9,273,942	9,882,546	10,735,724	10,770,243
CPI	199.2	201.8	208.9	216.6	216.2
Real FY05 \$	9,162,740	9,154,456	9,422,039	9,874,528	9,924,425

Analysis of Inputs

Police Grant Fund Nominal & Real FY05-FY09



	ACTUAL FY 2005	ACTUAL FY 2006	ACTUAL FY 2007	ACTUAL FY 2008	ACTUAL FY 2009
— Total	886,186	1,938,087	1,591,794	388,051	183,327
— CPI	199.2	201.8	208.9	216.6	216.2
— Real FY05 \$	886,186	1,913,117	1,517,620	356,922	168,930

Comparative Department / Employee Analysis

Police Department	# of Sworn Officers 2008	Population 2008	# Officers Per 1,000 Population
Boise	302*	203,770	1.5
Caldwell	60	41,766	1.5
Coeur d'Alene	68	43,278	1.6
Idaho Falls	91*	53,566	1.7
Meridian	71	69,466	1.1
Nampa	129	83,007	1.6
Pocatello	87*	54,901	1.6
Twin Falls	63	42,417	1.5
Average for US City Police Agencies			2.3
US Cities w/population 50,000 – 99,999			1.8
Average Idaho Police Department			1.6

*Total number of sworn officers includes officers assigned to the City's respective airport.

- Boise Airport has 26 full-time officers (4 K9 units), 7 part-time officers
- Idaho Falls Airport has 2 full-time officers and 1 part-time officer
- Pocatello Airport has 3 full-time and 2 part-time

*Number of Sworn Officers is the actual number of filled positions reported to the Idaho State Police (ISP) and published in ISP's Crime in Idaho yearly publication.

Measures of Efficiency

Additional Staffing Comparables

	Sworn FTEs Per 1,000 Population	Civilian FTEs Per 1,000 Population	Total FTEs Per 1,000 Population
ICMA Survey Mean	1.82	0.46	2.28
ICMA Survey Median	1.73	0.48	2.21
Pocatello	1.64	0.69	2.33

Source: ICMA FY08 Survey, Police Services, cities between 25,000 to 100,000 population
Figure 13-3 "Sworn and Civilian FTEs (full time equivalents) per 1,000 Population"

FMLA Expenses

	Hours	\$ Amount
Comp Time	258.901	5,312.35
On the Job Injury	998.750	22,475.48
Sick	1,606.318	37,144.98
No Pay Time Off	1.398	0.00
Police Holiday	204.163	4,141.61
Vacation	777.209	15,877.80
Total	3,846.739	84,952.22

Measures of Efficiency

Additional Expense Comparables

	Total Operating and Maintenance Expenditures Per Capita
ICMA Survey Mean	\$205
ICMA Survey Median	\$205
Pocatello w/o Grants	\$193.45
Pocatello with Grants	\$196.48

Pocatello's police expenditures are comparable; just a little less than average.

Source: ICMA FY08 Survey, Police Services, cities between 25,000 to 100,000 population
Figure 13-4 "Total Operating and Maintenance Expenditures Charged to the Police Department per Capita"

2009 Grants

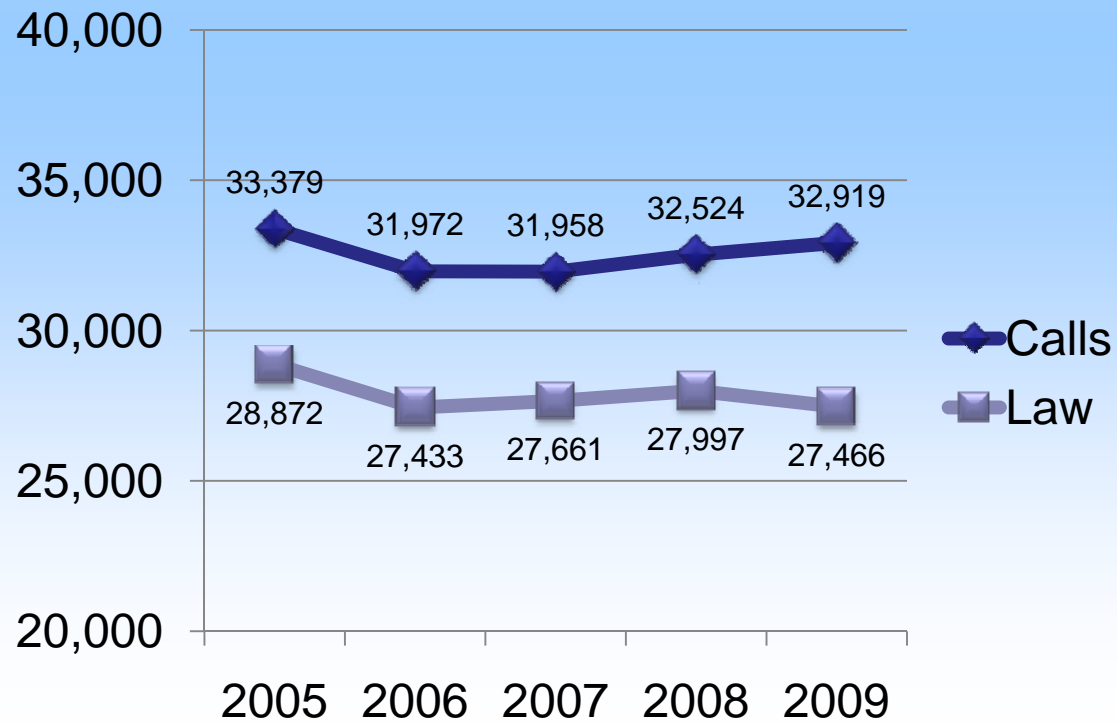
- **\$202,316 (Stimulus)**
 - 46 Ballistic vests
 - 6 Police cars
 - Emergency lights & sirens
 - Patrol dog
- **\$33,897 (Stimulus)**
 - Evidence drying cabinet
 - Computerized Voice Stress Analyzer
 - 6 Radio Batteries
 - 50 Glock Pistols
 - 3 Patrol Rifles
 - 30 Emergency Bags
- **\$113,000 (DV STOP)**
 - Half-time employee
 - Case Tracking Software and licenses
 - Classroom Build-out
 - Tables and chairs
 - White boards
 - Projector stand and screen

2009 Preliminary Comparative Crime and Arrest Analysis

Police Department	Total Offenses (Nibrs) 2009*	Change in Offenses from 2008	Offenses Cleared	Clearance Rate
Boise	13,390	-563	4,760	35.6%
Caldwell	3,168	-409	1,610	50.8%
Coeur d'Alene	3,683	+134	1,756	47.7%
Idaho Falls	3,963	-315	1,472	37.4%
Meridian	2,482	-316	1,129	45.5%
Nampa	5,269	-423	2,208	41.9%
Pocatello	4,362	+103	1,743	40.0%
Twin Falls	3,365	-504	1,607	47.8%

CALLS FOR SERVICE & LAW INCIDENTS 2005 - 2009

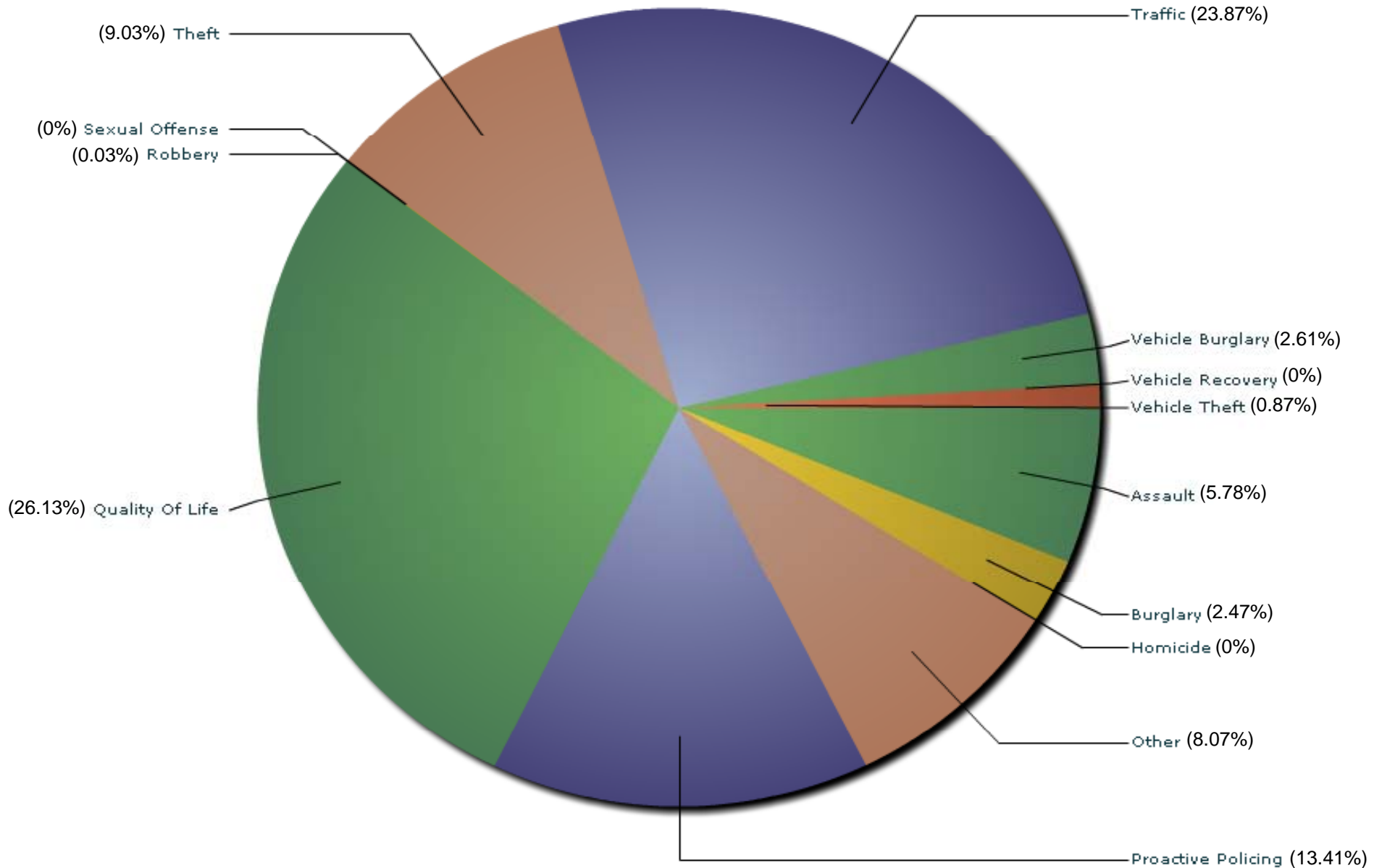
	2005	2006	2007	2008	2009
Calls	33,379	31,972	31,958	32,524	32,919
Law	28,872	27,433	27,661	27,997	27,466
Responding Officers	72	73	74	74	74
Calls	464	438	431	440	445
Law	401	376	373	378	371



CrimeReports.com

October 1, 2009 to December 31, 2009

Crime Type as a Percentage of Total Crime



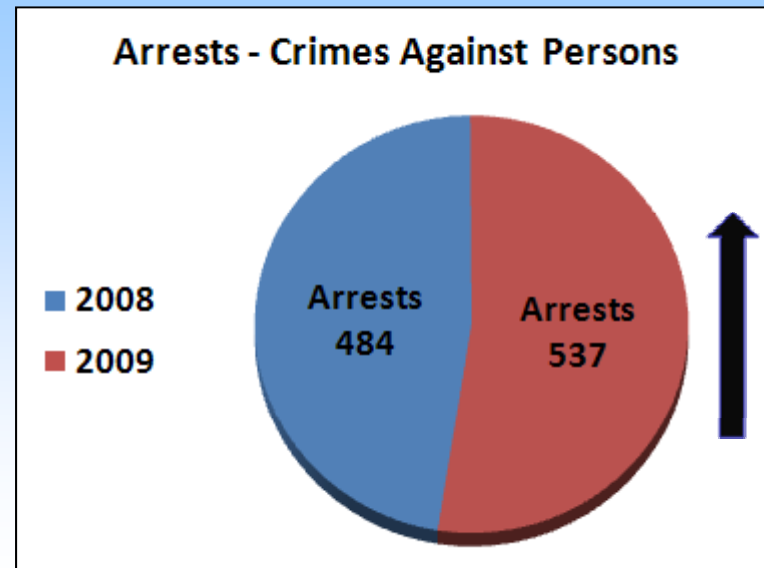
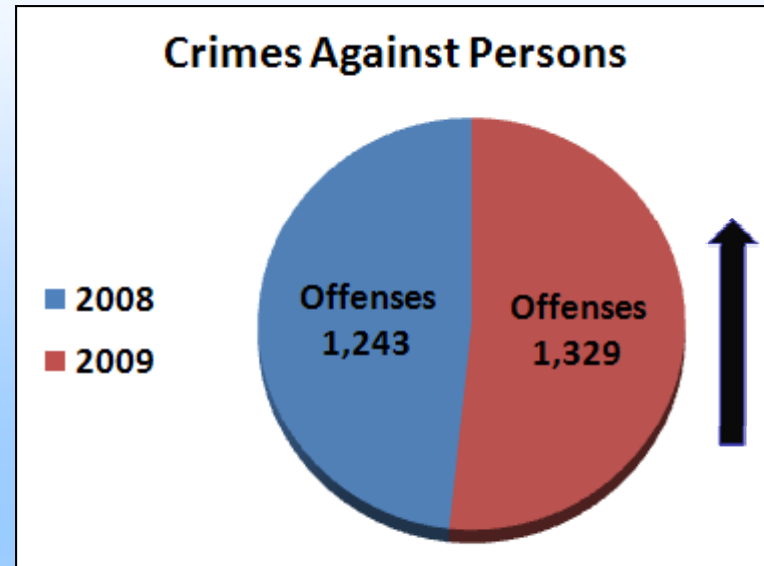
Dispatch Calls 2008 – 2009

Hour	Mon	Tues	Wed	Thur	Fri	Sat	Sun	2009 Total	2008 Total
00:00-00:59	107	118	128	124	135	224	254	1090	1086
01:00-01:59	87	79	111	127	89	199	216	908	876
02:00-02:59	53	73	60	109	106	175	197	773	835
03:00-03:59	39	41	41	65	78	129	108	501	495
04:00-04:59	23	33	34	57	50	63	69	329	356
05:00-05:59	29	32	25	31	34	49	42	242	244
06:00-06:59	50	35	45	40	39	40	51	300	297
07:00-07:59	92	96	85	87	104	82	58	604	636
08:00-08:59	219	189	200	163	192	139	69	1171	1148
09:00-09:59	207	193	198	185	194	163	123	1263	1324
10:00-10:59	222	215	186	203	180	127	140	1273	1249
11:00-11:59	212	208	201	209	190	154	163	1337	1289
12:00-12:59	250	234	203	216	207	177	156	1443	1480
13:00-13:59	231	213	222	232	232	153	156	1439	1529
14:00-14:59	246	241	224	222	206	156	160	1455	1494
15:00-15:59	260	255	235	216	234	181	182	1563	1593
16:00-16:59	268	203	256	204	204	188	180	1503	1513
17:00-17:59	246	243	242	228	257	185	192	1593	1637
18:00-18:59	217	209	221	226	228	215	189	1505	1592
19:00-19:59	201	204	199	183	215	207	208	1417	1374
20:00-20:59	178	198	223	192	209	190	176	1366	1414
21:00-21:59	183	139	166	163	221	179	164	1215	1312
22:00-22:59	161	152	174	186	255	231	156	1315	1296
23:00-23:59	134	137	161	163	229	251	136	1211	1274
2009 Total by Day	3915	3740	3840	3831	4088	3857	3545	26816	
2008 Total by Day	3843	3912	3897	3902	4233	4019	3537		27343

Crimes Against Persons Comparison 2008 – 2009

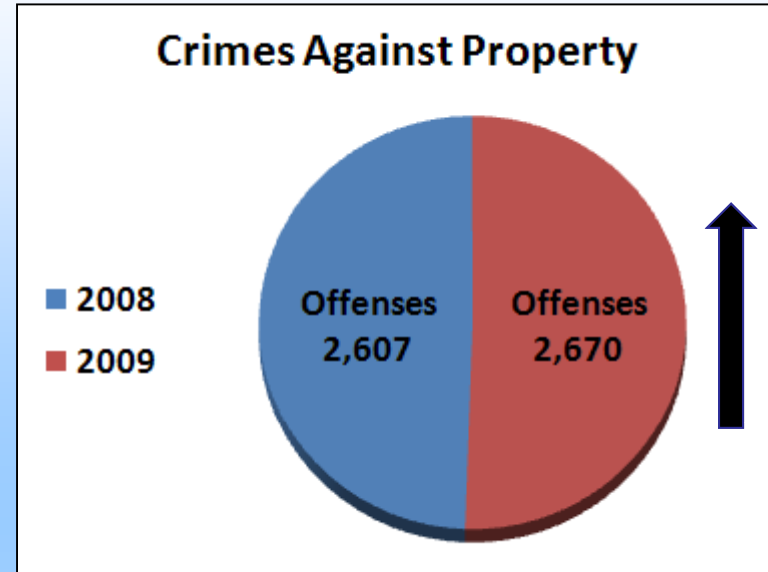
Crimes Against Persons		
Offense	2008	2009
Murder	1	1
Negligent Manslaughter	0	0
Forcible Rape	37	28
Forcible Sodomy	2	1
Sexual Assault w/ Object	1	0
Forcible Fondling	18	14
Incest	0	0
Statutory Rape	7	8
Aggravated Assault	135	129
Simple Assault	983	1105
Intimidation	54	39
Kidnapping/Abduction	5	4
Total	1243	1329

Arrests – Crimes Against Persons		
Offense	2008	2009
Murder	0	0
Negligent Manslaughter	0	0
Forcible Rape	2	6
Forcible Sodomy	0	0
Sexual Assault w/ Object	0	0
Forcible Fondling	8	3
Incest	0	0
Statutory Rape	4	3
Aggravated Assault	55	49
Simple Assault	388	454
Intimidation	25	20
Kidnapping/Abduction	2	2
Total	484	537

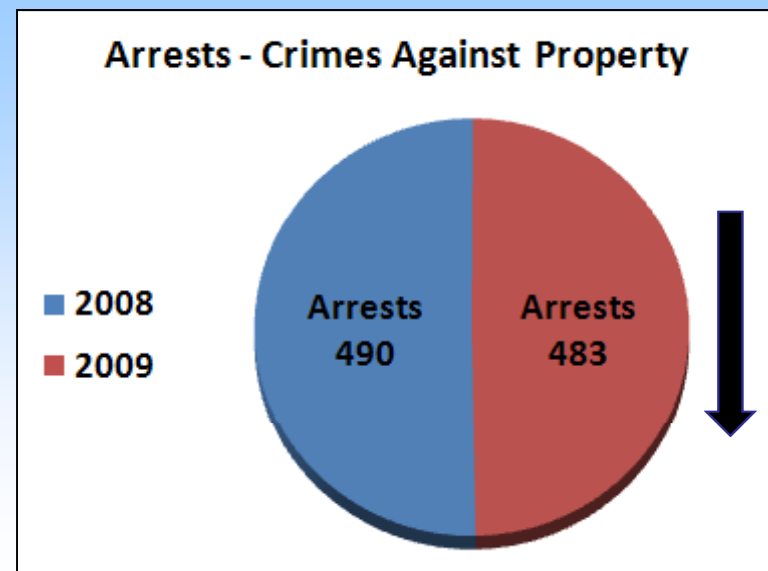


Crimes Against Property Comparison 2008 – 2009

Crimes Against Property		
Offense	2008	2009
Robbery	11	11
Burglary/Breaking & Entering	252	255
Larceny/Theft Offenses	1304	1288
Motor Vehicle Theft	63	63
Arson	11	11
Vandalism/Destruction of Prop.	810	864
Counterfeit/Forgery	19	31
Fraud Offenses	105	107
Embezzlement	14	23
Extortion/Blackmail	2	0
Bribery	0	0
Stolen Property	16	17
Total	2607	2670

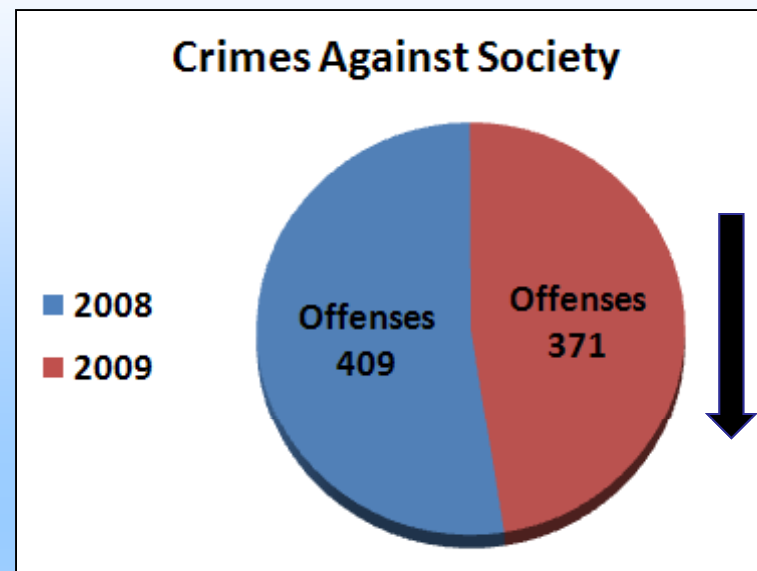


Arrests - Crimes Against Property		
Offense	2008	2009
Robbery	7	5
Burglary/Breaking & Entering	15	19
Larceny/Theft Offenses	248	246
Motor Vehicle Theft	8	4
Arson	11	7
Vandalism/Destruction of Prop.	123	132
Counterfeit/Forgery	10	17
Fraud Offenses	21	13
Embezzlement	11	12
Extortion/Blackmail	4	0
Bribery	0	0
Stolen Property	32	28
Total	490	483

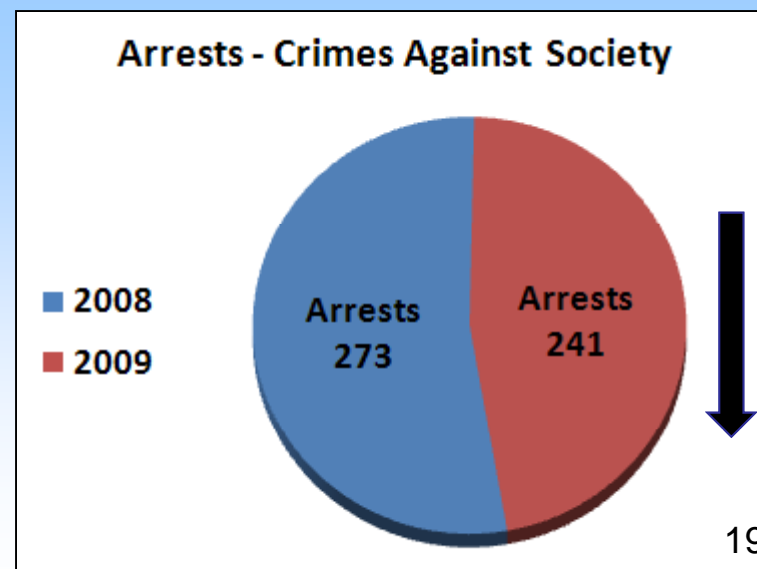


Crimes Against Society Comparison 2008 – 2009

Crimes Against Society		
Offense	2008	2009
Drug/Narcotics Violations	169	167
Drug Equipment Violations	142	149
Gambling Offenses	0	0
Pornography/Obscene Material	7	6
Prostitution	1	0
Weapon Law Violation	90	49
Total	409	371

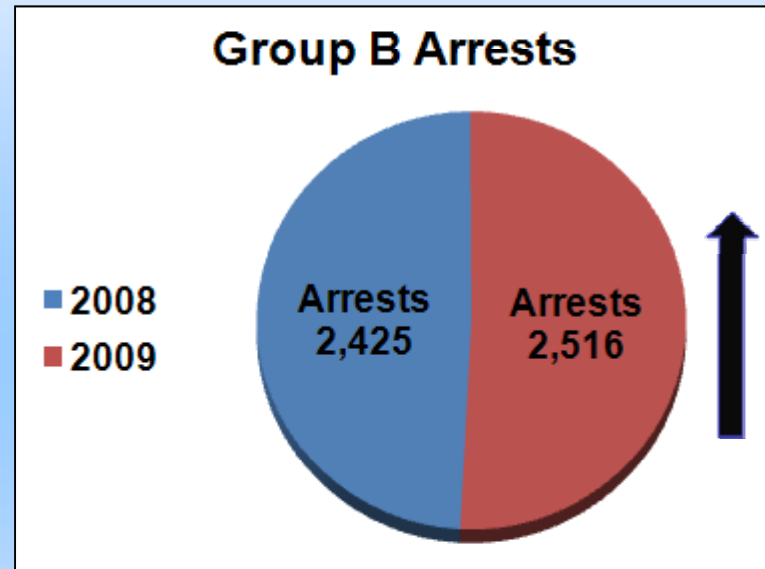


Arrests - Crimes Against Society		
Offense	2008	2009
Drug/Narcotics Violations	155	153
Drug Equipment Violations	48	54
Gambling Offenses	0	0
Pornography/Obscene Material	3	2
Prostitution	1	0
Weapon Law Violation	66	32
Total	273	241

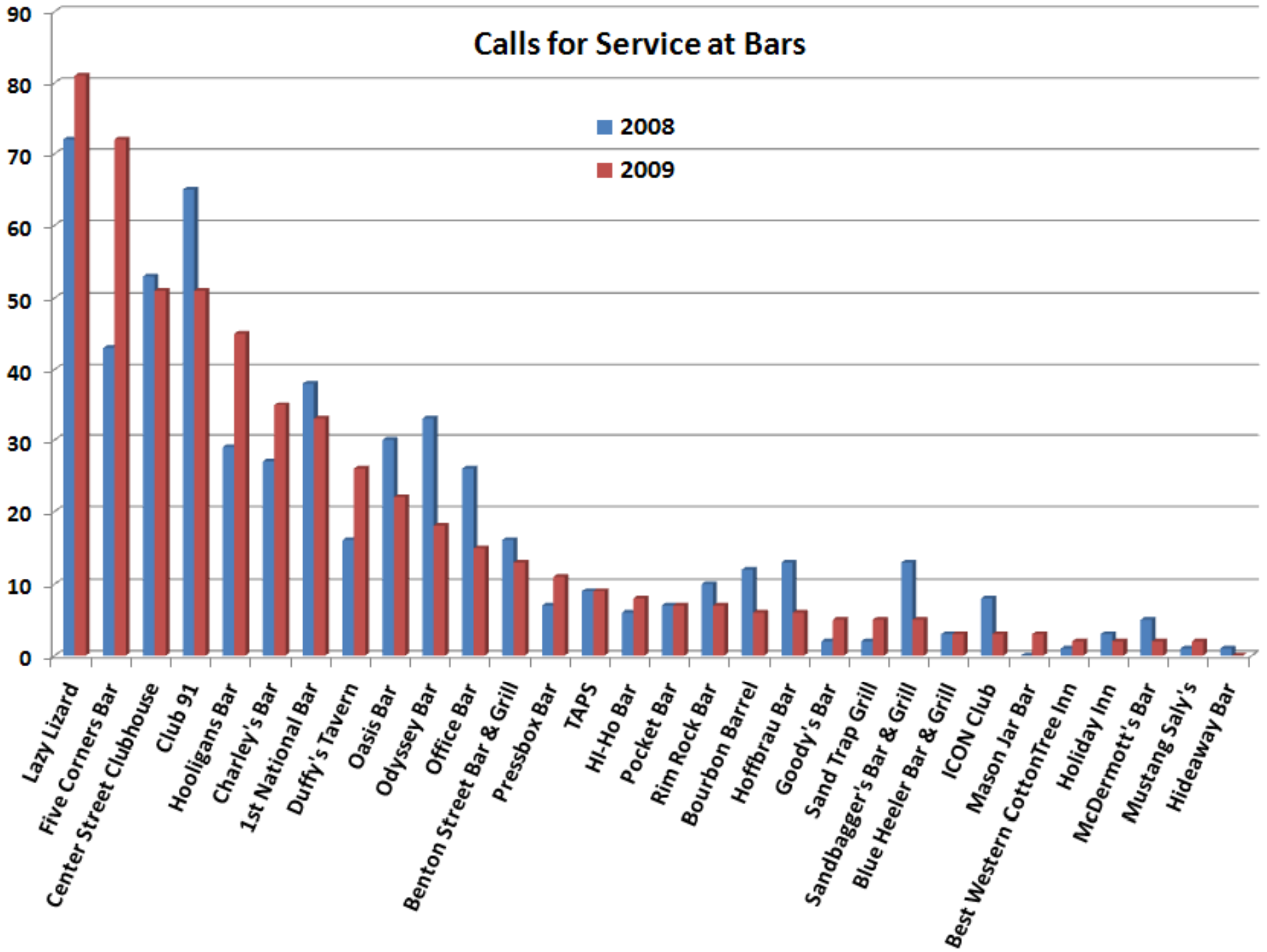


Group B Arrests Comparison 2008 - 2009

Group B Arrests		
Offense	2008	2009
Bad Checks	14	10
Curfew/Loitering/Vagrancy	28	13
Disorderly Conduct	355	351
DUI	354	461
Drunkenness	17	21
Non-violent Family Offense	38	37
Liquor Law Violation	366	302
Peeping Tom	0	1
Runaway	102	112
Trespass	78	64
All Other Offense	1073	1144
Total	2425	2516

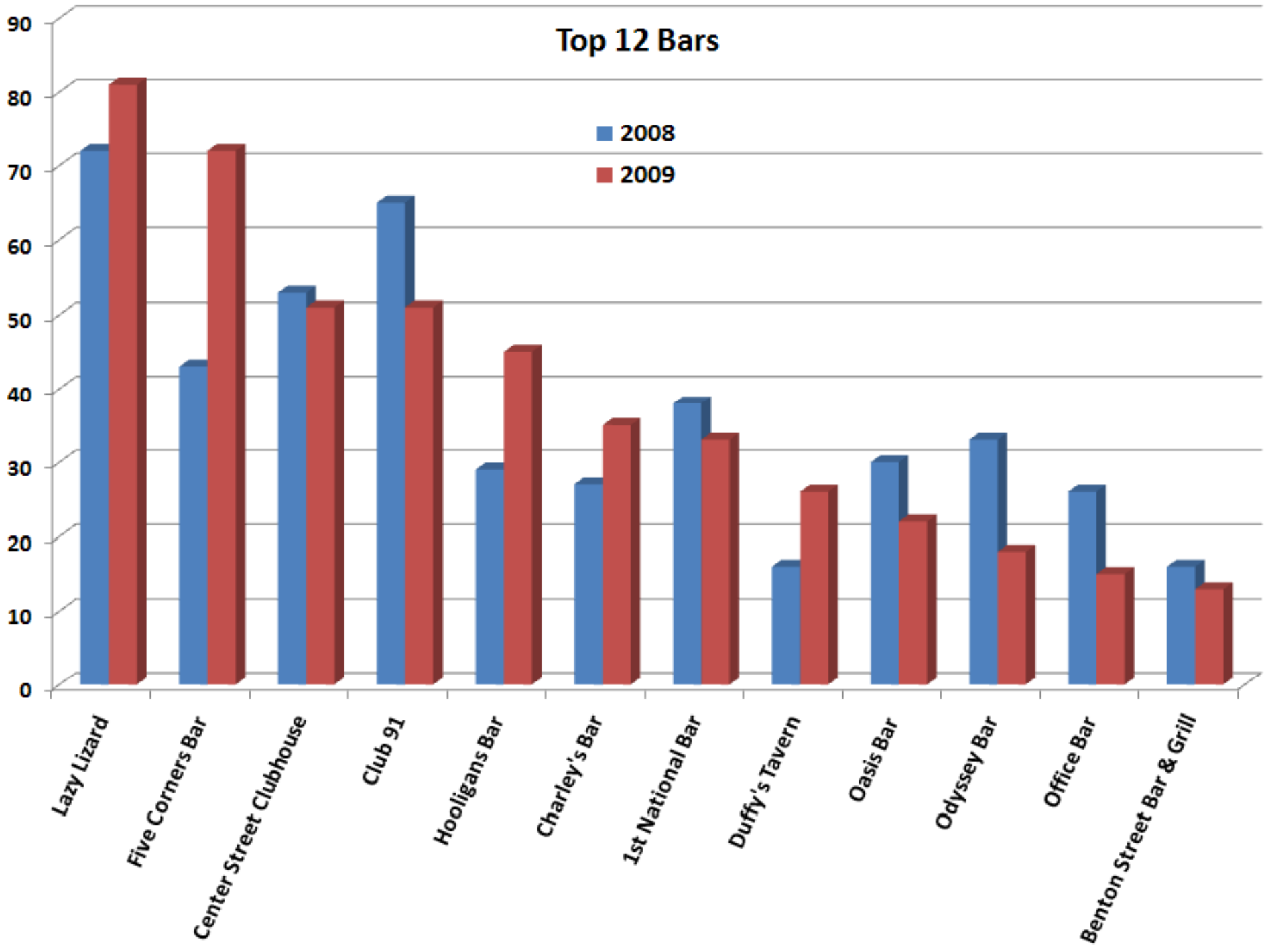


Calls for Service at Bars



Top 12 Bars

■ 2008
■ 2009



OFFICER USE OF FORCE

RESPONSE TO AGGRESSION REPORTS

	Total Use of Force Incidents	Incidents Involving Officer Injuries	Officers Injured	Suspects Injured
2009	101	13	15	18
2008	76	11	13	25
2007	93	13	14	35
2006	70	12	14	27
2005	79	10	10	19

	2007	2008	2009
Bodily Force Only	86%	70%	76%
Canine Involved	3%	4%	2%
TASER Involved	1%	24%	34%
Bodily Force plus TASER	0%	0%	16%
Bodily Force plus Chemical Agent/Baton	10%	2%	0%

DIVISION PROGRAMS

PATROL DIVISION

- **RESPONSIBILITIES**

- 24/7 Patrol/First Response
 - Staffing Levels
 - Patrol Teams
 - Misdemeanor investigations
 - Initial felony investigations
- Traffic Enforcement
 - Monthly traffic enforcement plan – data driven enforcement
 - Crash investigation
 - Special event escorts
- Community Policing
 - Problem solving, partnership building, neighborhood communication
 - Five teams covering five sections of city

	2008	2009
Abandoned Vehicle	1066	837
Accidents	1597	1433
Citations	6758	6324
DUI Arrests	371	470
K-9 Deployments	194	175

PATROL DIVISION

- **SPECIAL UNITS/PROGRAMS**
 - Canine Unit
 - 3 cross trained apprehension/drug dogs
 - 2 explosive detection dogs
 - Training consistent with State certification
 - Immediate Response Unit
 - SWAT
 - Crisis Negotiations
 - NTOA training standards
 - Field Training Program
 - Field Training Officers
 - Train and develop new officers
 - Bicycle Unit
 - Downtown and Transit patrol
 - Special event coverage

INVESTIGATIONS DIVISION

- **COLD CASE HOMICIDE INVESTIGATIONS**
 - Linda Smith – June 13, 1981
 - Cindy Bringham – June 5, 1983
 - Nori Jones – Sept 28, 2004
 - Lorne Red Elk – June 14, 2009
- **COMPUTER FORENSICS EXPANDED**
 - Internet Crimes Against Children (ICAC) and hard drive imaging
 - Assisted other jurisdictions in computer forensic cases
 - Power County, American Falls Police Department, Bingham County, Oneida County, and Madison County
- **INTERNET CRIMES AGAINST CHILDREN TASK FORCE**
 - Alliance with Federal authorities / offenders prosecuted at either State or Federal level
 - Specialized Peer-2-Peer Computer Training provided by ICAC grant
 - Created local taskforce for ICAC
- **POSITIVE INVOLVEMENT WITH MEDIA IN CRIME ADVISORIES**
 - Numerous occasions where the public turned suspects in after they saw reports in the local media, resulting in multiple suspects being identified and criminal charges being filed
 - Police Department has an excellent partnership with the local news media

INVESTIGATIONS DIVISION

- **GENERAL INVESTIGATION UNIT**
 - Comprised of Burglary, Robbery, Sexual Assault, Death Scene Investigation, and Grand Theft
 - Reorganized unit to better meet needs of the department and efficiency of the division
 - Productivity remains high in all aspects of Investigations
- **NARCOTICS OFFICE**
 - Most commonly used illegal substances
 - Marijuana
 - Methamphetamine
- **CRIME ANALYSIS UNIT**
 - Case support
 - Idaho Criminal Intelligence Center – [IC]2 (Fusion Center)
 - Intelligence distribution
 - Map specific crimes
 - Link Analysis
 - RISSafe
 - MADPAC / Ada County Sheriff's Office
- **MERCHANTS COMMUNITY RETAIL THEFT PROGRAM**
 - Meet, educate and share information with merchants on theft crimes
 - Training on methamphetamine products
 - Counterfeit money recognition

INVESTIGATIONS DIVISION

DOMESTIC VIOLENCE

- “Recovery Act Stop Grant” – allowed department to purchase equipment and hire part time employee to promote safe and healthy families, work to end physical and mental abuse, and provide victim support

VICTIM/WITNESS SERVICES

- Plays an expanded role in providing services and resources to a much broader group of victims and their families
- Added an emphasis on victims of Elder Abuse

	2007	2008	2009
Domestic Incidents	596	486	465
Cleared by Arrest	282	215	253

POLICE EVIDENCE

- Complete full inventory of property held in Police Evidence
- Forensic expansion and development
- Training to better assist officers in apprehension and conviction of criminal suspects

SUPPORT SERVICES DIVISION

- **RECORDS DIVISION**

- Child Safety Seat Inspections
- Safety Fairs
- Community Fingerprinting
- City License Processing
- COPS Teams

- **E-911 CENTER**

- 159,520 calls received
- New Dispatch Equipment
- Now receiving most wireless calls from the Pocatello area

- **LICENSING ENFORCEMENT**

- Process and issue business licenses
- Business Inspections
- Investigate Complaints
- Helped to enact new City Ordinance “Children’s Teaching Centers”

- **AIRPORT OFFICERS**

- 3 full-time officers and 2 part-time officers
- Airport Security Coordinator
- FAA Inspection Compliance

- **CODE ENFORCEMENT**

- Complaint driven
- Neighborhood assessments

- **CODE ENFORCEMENT**

OFFENSES	2008	2009
Accumulations	15	35
Curb-Sidewalk	4	0
Fence	0	1
Historic District	0	0
Nuisance	15	9
Prop Maintenance	998	690
Rec Vehicle	18	16
Signs	3	3
Snow Removal	28	51
Vehicles	33	15
Zoning	11	8
Ordinance Violation	24	0
Unfounded		30
TOTALS	1149	858

DISPOSITIONS	2008	2009
Active	299	145
Closed	838	633
Citations	11	26
Unfounded	1	54
TOTALS	1149	858

SUPPORT SERVICES DIVISION

- **SPECIAL FUNCTIONS**

- School District #25 Emergency Crisis Planning & Threat Assessment Committees
- Merchants Community Retail Theft Meetings Monthly
- Community Prevention Meetings
- Key Communicators Network

- **COMMUNITY SERVICES CRIME PREVENTION OFFICER**

- Completed over 500 presentations throughout the community
- Conducted 47 Internet Safety Presentations to 4,369 people
- Presented Stranger Danger & Internet Safety to the elementary and middle schools
- Oversees Volunteer Program
 - Volunteers completed 13,736 hours of services amounting to \$278,154
 - McGruff Volunteers = 558
 - Department Volunteers = 77
 - Neighborhood Watch = 485
- Monthly Recognition and Annual Appreciation Banquet

- **JUVENILE RESOURCE PROGRAMS**

- DIVERSION / YOUTH COURT PROGRAM
 - Programs to hold first time offenders accountable without a juvenile court record
- C.A.G.E – Community Anti Gang Enforcement – Regional
- D.D.R.C. – District Discipline Review Committee
- D.A.R.E. – Drug Abuse Resistance Education
- G.R.E.A.T Program – Gang Resistance, Education & Training
 - Over (80) 7th and 8th graders participated in the G.R.E.A.T. Summer Component Program

- **SCHOOL RESOURCE OFFICERS**

- SROs held 294 truancy conferences with students and over 1,000 conferences with parents³¹
- Target 50 Summer Program

School Resource Officer Functions by Schools

SCHOOL DISTRICT #25 PARTIALLY FUNDS
SUPPORT SERVICES POSITIONS
TOTALING \$217,554.19

- 4 School Resource Officers
- 1 Administrative Assistant

TOTAL JUVENILE ARRESTS	2008	2009
Arrests	1153	947
Offenses	1405	1126

School	Officer	Charges/Arrests	Reports # of orig. LI's	Follow-up	Traffic: # of citations	Truancy: # of cases	Truancy Conferences	Conferences: # of parent conf.	Probation: # of home visits	Classroom: # of GREAT classes	Classroom: # of other presentations	Classroom: # of DARE classes	Classroom: # of K-5 DARE visits	Diversions: # of informal	After School: # of after school events	Elem. Schools: # of calls taken	Patrol Calls: # of calls taken unrelated to school	Bullying	Emergency Drills
Century	Fry	56	107	11	38	27	57	266	13	1				13	52	32	1	7	7
Highland	Daniels	92	221	1	24	32	46	172	5		8			45	47	11	13		4
Pocatello	Peck	190	183	10	4	24	31	51	67		14			32	14	3	13		4
Alameda Ctr.	Barbre	164	171	23	4	30	48	148	17		23			20	8	9	20	1	2
Franklin	Hancock	54	44	14	10		3	86	2	65				15	30	14	7	14	4
Hawthorne	Harris	61	143	19	1	22	32	117	1	60	12			8	21	50		10	7
Irving	Ballard	64	115	30	3	27	23	109	22	60	19			27	32	36	13	12	4
DARE	Nielsen	17	36	10		7	2	8			35	237	204		24	23	7	3	5
Sgt/Elem.	Canfield	14	82	8	1	56	52	52	3		11			15	4	80	3	7	5
Total		712	1102	126	85	225	294	1009	130	185	123	237	204	175	232	258	77	54	42

SUCCESSION PLANNING

- **68 POST Certificates earned:**
 - **Basic**
 - **Intermediate**
 - **Advanced**
 - **Master**
 - **Supervisor,**
 - **Management**
 - **Instructor Certificates**
- **FBI National Academy - Captain Terry Felsman**
- **FBI Command College - Lieutenant Jim Peterson**
- **Increased training by developing squad/block training, which made training more efficient**

SUPPORT SERVICES DIVISION

COMPLETED TRAINING

Instructors Trained

Arrest Techniques (7)
Ground Control (7)
Handgun Retention (7)
Impact Weapons (7)
Less Lethal/Interactive (7)
Sniper/Observer (3)
Firearms (1)
Patrol Procedures (1)
Fitness and Health (4)
SWAT (1)
Bicycle (1)
Instructor Development (2)
Taser (3)
Pepperball (2)
Lifeloc Breath Test (2)

High Liability

Arrest Techniques
Ground Control
Impact Weapons
CIT Training
Field Sobriety Testing
EVOC
Firearms Interdiction
Basic SWAT Course
Taser
Sniper Training
Motorcycle Training
Glock Armorer
Combat Firearms
Shield Training
AR 15 Armorer
Bicycle Re-Certification
Monthly K9 Training
Monthly IRU Training
EMD Training (Dispatch)

Investigations

Street Crimes
Basic Crime Scene Investig
Prescription Drug Crimes
DEA School
Interview and Interrogation
ICAC Computer Crimes
Polygraph Re-Cert
CVSA Re-Cert
Arson Investigation
Burglary/Robbery
Internal Affairs
Identity Theft
Crime Scene Photography
Bloodstain Pattern Analysis
Agro Terror
CVSA Operator Course
Death Investigations

Supervision

Tactical Commander
Command Leadership FTO
First Line Supervisors
FBI Command College
FBI Academy
ICS 300
ICS 400
Leadership Seminar
How to Supervise People

SUPPORT SERVICES DIVISION

TRAINING NEEDS

Needed Instructors

Instructor Development:

2 Additional Instructors

Accident Investigator:

2-3 Additional Instructors

Domestic Violence:

No Instructors

Crime Scene:

No Instructors

Bicycle:

2 Additional Instructors

High Liability

EVOC Re-cert

Arrest Techniques Re-cert

Handgun Retention

Impact Weapons Re-cert

Ground Fighting Re-cert

Firearms(Handgun/Shotgun)

Rifle Training

Legal Updates

Ethics

Cultural Diversity

Basic Motor School

Patrol Tactics

Investigations

Death Investigation

Crime Scene Investigation

Interview and Interrogation

Accident Investigation

Domestic Violence

CVSA Operator(s)

Polygraph Operator(s)

Crimes Against Children

Computer Crimes

Criminal Profiling

Burglary/Robbery

Financial Crimes

Continued Narcotics Investig

Accident Investigation

Supervision

First Line Supervisors

Management Courses

ICS

Leadership Courses

HOMELAND/DOMESTIC SECURITY

- **2009 PROJECT REVIEW**
 - Five Year Plan review
 - National Incident Management System (NIMS)
 - City of Pocatello Emergency Operations Plan (EOP)
 - Airport Emergency Operations Plan
 - Continuity of Operations Plan (COOP)
 - Continuity of Government Plan (COG)
 - Memorandums of Understanding (MOUs)
 - Local Emergency Planning Committee
 - Grant research
 - Security assessments / City Structures
 - Presentation of disaster programs to assorted community groups
 - H1N1 Point of Distribution Liaison for City Pandemic Policy
 - Homeland Security Quadrennial Review
 - City Emergency Operations Plan (EOP) upgraded and brought into NIMS compliance
 - NIMS Components:
 - Preparedness
 - Communications/Information Management
 - Resource Management
 - Command Management
 - Ongoing Management Maintenance

- **2010 PROJECT REVIEW**
 - Management Training
 - Disaster Exercise
 - EOC Build-out
 - Implementation of Field Force
 - Redevelopment of Mobile Field Force component
 - Identification of critical infrastructure locations

HOMELAND/DOMESTIC SECURITY

Emergency Support Functions

Emergency Support Function #	Function Title	Responsible Department
1	Transportation	Transit
2	Communications and Warning	Pocatello Police
3	Public Works and Engineering	Public Works
4	Firefighting	Pocatello Fire
5	Emergency Management	Pocatello Fire
6	Mass Care	Parks and Recreation
7	Resources Support	Pocatello Fire
8	Health and Medical Services	Pocatello Fire
9	Search and Rescue	Pocatello Fire
10	Hazardous Materials	Pocatello Fire
11	Agriculture and Natural Resources	Pocatello Animal Control
12	Energy	Public Works
13	Public Safety and Security	Pocatello Police
14	Community Recovery and Mitigation	Mayor's Office
15	External Affairs	Pocatello Police/Mayor's Office
16	Military Support	Mayor's Office

2010 – 2011 PROJECTS & GOALS

- **Seek alternative funding sources**
- **Increase Forensic and Analytical capabilities**
- **Increase Elderly Abuse awareness and resources**
- **Continue Implementation of Critical Incident Team for Mental Health incidents**
- **Proactive recruitment**
- **Complete Mesh Network**
- **Enhance security for all City buildings**
- **Expand intelligence capabilities with the Idaho Fusion Center**
- **Identify narcotics distribution patterns**
- **Improve effectiveness of preventative patrol and quality of investigations**
- **Redesign department's Community Oriented Policing/Problem Oriented Policing programs**
- **Improve emergency/disaster preparedness**

2010 – 2011 ISSUES & CONCERNS

- **MEET EXPANDED RESPONSIBILITIES OF OUR COMMUNICATIONS CENTER**
 - E-911
 - (3 Dispatchers)
- **NO SWORN PERSONNEL INCREASES FOR THE LAST FIVE YEARS**
 - Department reorganization
 - (6 Patrol Officers)
 - (1 Grant Researcher/Writer)
 - No substantial pay increase
- **CRITICAL TRAINING NEEDS**
 - Supervision
 - High Liability
 - Investigations
- **ENHANCEMENT OF CASE SOLVABILITY**
 - Trend Analysis/Link Analysis/Pen-Link
 - Crime Intelligence and Investigative Support
 - (1 Crime Analyst)
- **RETURN ON INVESTMENT / TRAINING**
 - \$10 return for every \$1 expended on training
- **CAPITAL EXPENDITURES**
 - Vehicle Replacements
 - IRU Specialty Vehicle
- **CITY BUILDING SECURITY**